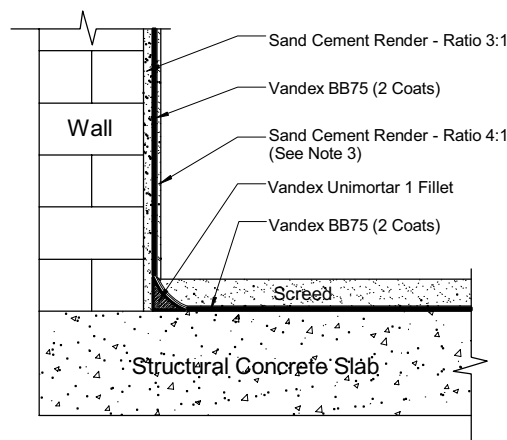
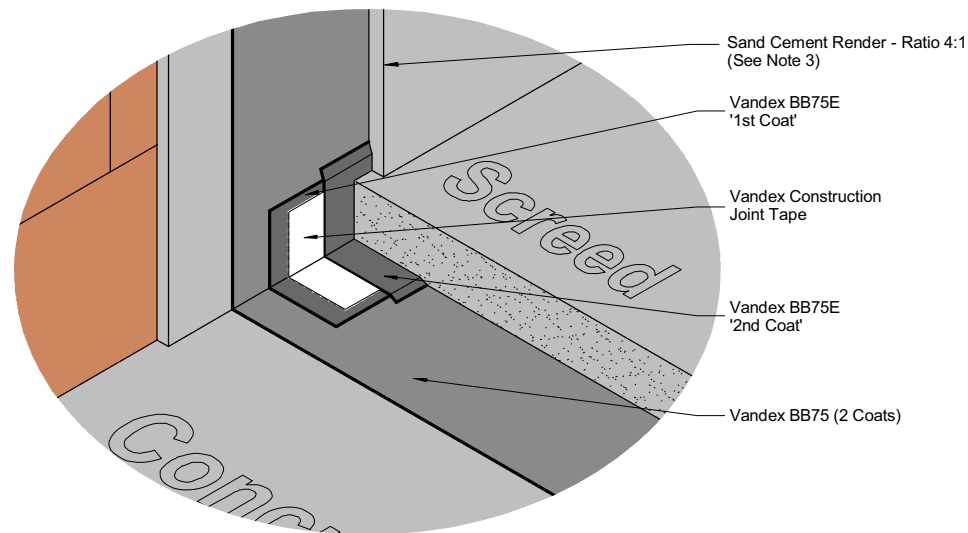
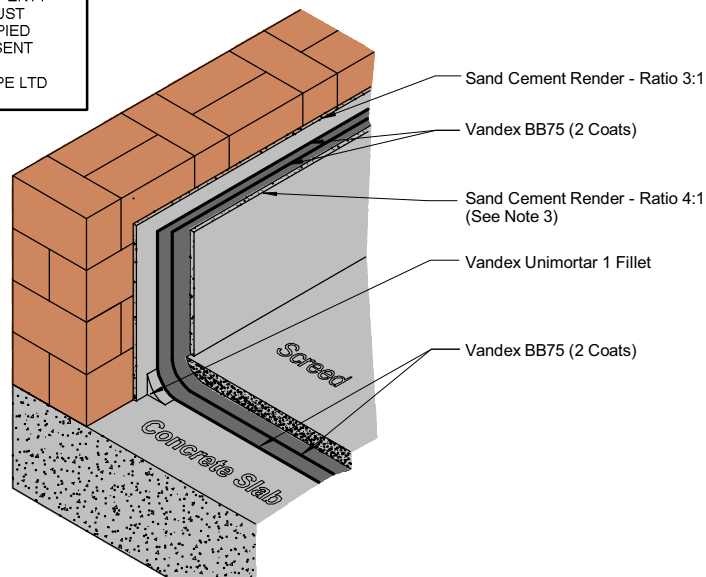
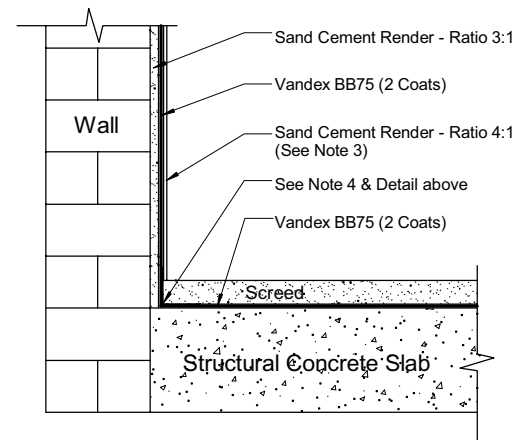


THIS DRAWING IS THE PROPERTY
OF SAFEGUARD AND MUST
NOT BE LOANED OR COPIED
WITHOUT WRITTEN CONSENT

© 2007 SAFEGUARD EUROPE LTD



Typical New Construction



Typical Refurbishment

- NOTES:**
1. All SAFEGUARD CAD drawings show typical applications and our Technical Department should be consulted before they are used for specification purposes.
 2. Product applicators should refer to the manufacturer's application/installation guidelines.
 3. 4:1 render, 1:1:6 lime plaster or cementitious renovating plaster.
 4. 2 Coats of 100mm x 100mm x 2.5mm Vandex BB75E reinforced using Vandex Construction Joint Tape

System Drg.
Nos:

VAND-004(3).tcw (TurboCAD)
VAND-004(3).dwg (Autocad)
VAND-004(3).pdf (Acrobat)

CLIENT:-

Safeguard Europe Ltd

CONTRACT No:

DRAWN JDF, CBS

DATE 16th March 2005

SCALE (A3) Not To Scale

CHECKED

APPROVED

TITLE:

Wall/Floor Junction Details
Using
Vandex Waterproofing System

SAFEGUARD
MAKING BUILDINGS DRY

DRG. No.
VAND-004

REV
3

MOD. BY	DATE	CHK. BY	APP. BY	MOD. BY	DATE	CHK. BY	APP. BY	MOD. BY	DATE	CHK. BY	APP. BY
JDF, CBS	29/09/07										

Safeguard Europe Ltd, Redkiln Close, Redkiln Way, Horsham, West Sussex, RH13 5QL Tel: 01403 210204 Fax: 01403 217529 www.safeguardeurope.com